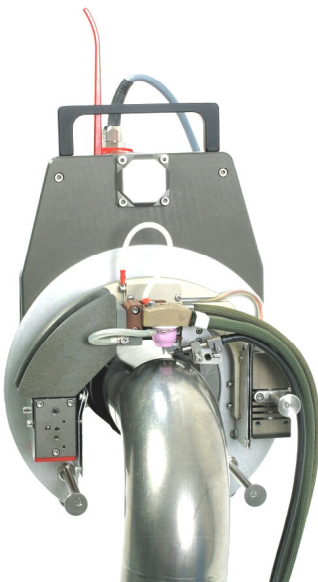


OPEN WELD HEADS – MU IV



MU IV standard version



MU IV with AVC/OSC

CHARACTERISTICS

- Heads for all welding applications for use on site or in workshop
- Easy and quick adjustable clamping and positioning device
- Each model covers a wide range of diameters. For example the MU IV 115 can cover a range of diameters from 25 to 115 mm
- Optional slide assemblies for arc voltage height control (AVC) and weaving motion (OSC)
- Modular design for simple adaptation to various tube geometries

USE

Easy adaptation to every applications in pipe systems, for the welding with or without filler wire

TECHNICAL DATA

- Range of diameters from 8 to 275 mm (0.325" to 11.17")
- High duty cycle due to water cooling of the torch
- Torch adjustable to 45°

APPLICATION SECTORS

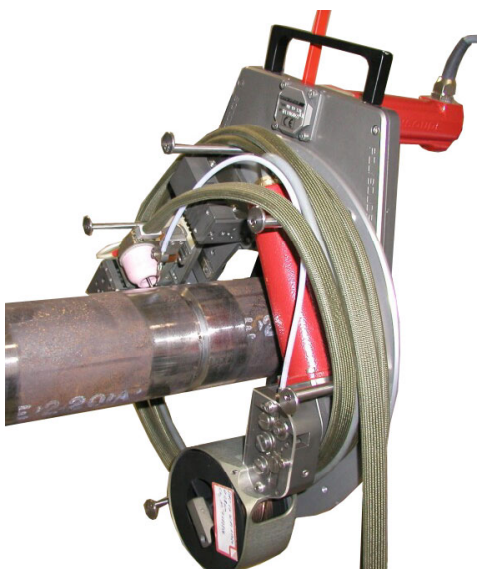
- Chemical industries
- Aeronautics / Aerospace
- Naval constructions
- Energy
- Nuclear industry
- Pharmaceutical / Biochemical industry
- Food & beverage industry

PROCESS

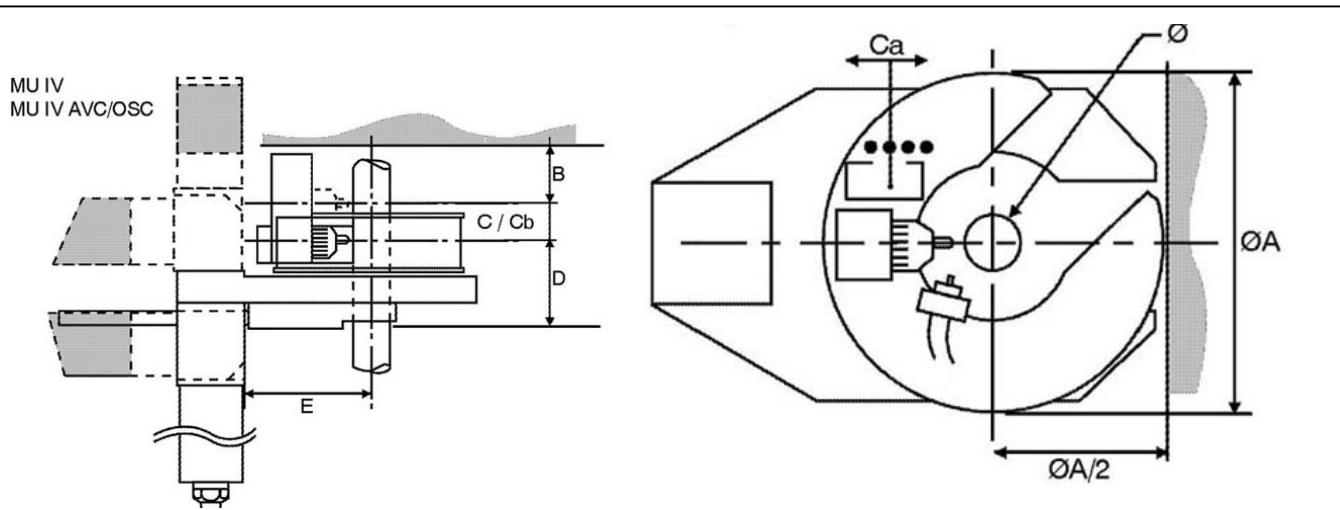
- TIG welding with or without filler wire

ACCESSORIES

- Clamping system (C) including one shell for one tube O.D.
- Protective case with foam interior
- 9 m hose cable
- Spare parts box



MU IV with integrated wire feeder



MU IV	Ø A	B	C	D	E
MU IV 28 P *	116	16	5	96	70
MU IV 8/38 P	126	16	5	96	72
MU IV 8 19/64 P *	155	16	5	98	93
MU IV 19/80 P	172	16	5	97	103
MU IV 19/104 P *	204	16	5	90	121,5
MU IV 25/115 P	215	16	5	101	148
MU IV 25/128 P *	240	16	5	99	173
MU IV 195 P	410	30,5	14	158,5	208
MU IV 245 P *	470	30,5	14	174,5	254
MU IV 275 P	500	30,5	14	172,5	276
MU IV 28 C *	116	16	5	79	70
MU IV 38 C *	126	16	5	79	72
MU IV 64 C *	155	16	5	88	93
MU IV 80 C *	172	16	5	88	103
MU IV 104 C *	204	16	5	90	121,5
MU IV 115 C *	215	16	5	92	148
MU IV 128 C *	240	16	5	108	173
MU IV 195 C *	410	30,5	14	178	208
MU IV 245 C *	470	30,5	14	180	254
MU IV 275 C *	500	30,5	14	178,5	276

MU IV AVC/BL	Ø A	B	Amplitude		D	E
			Ca	Cb		
MU IV 8/38 P	142	23	20	20	150	72
MU IV 19/64 P *	184	16	20	20	136	93
MU IV 19/80 P	200	16	20	20	136	103
MU IV 30/104 P*	222	16	20	20	140	121,5
MU IV 42/115 P	235	16	20	20	139	148
MU IV 42/128 P*	340	16	20	20	134	173
MU IV 195 P	410	16	20	20	165	208
MU IV 245 P*	500	16	20	20	179	254
MU IV 275 P	530	16	20	20	179	276
MU IV 38 C *	142	23	20	20	130	72
MU IV 64 C *	184	16	20	20	128	93
MU IV 80 C *	200	16	20	20	126	103
MU IV 104 C *	222	16	20	20	128	124,5
MU IV 115 C *	235	16	20	20	128	148
MU IV 128 C *	340	16	20	20	143	173
MU IV 195 C *	410	16	20	20	185	208
MU IV 245 C *	500	16	20	20	184	254
MU IV 275 C *	530	16	20	20	184	276

Standard

* on demand